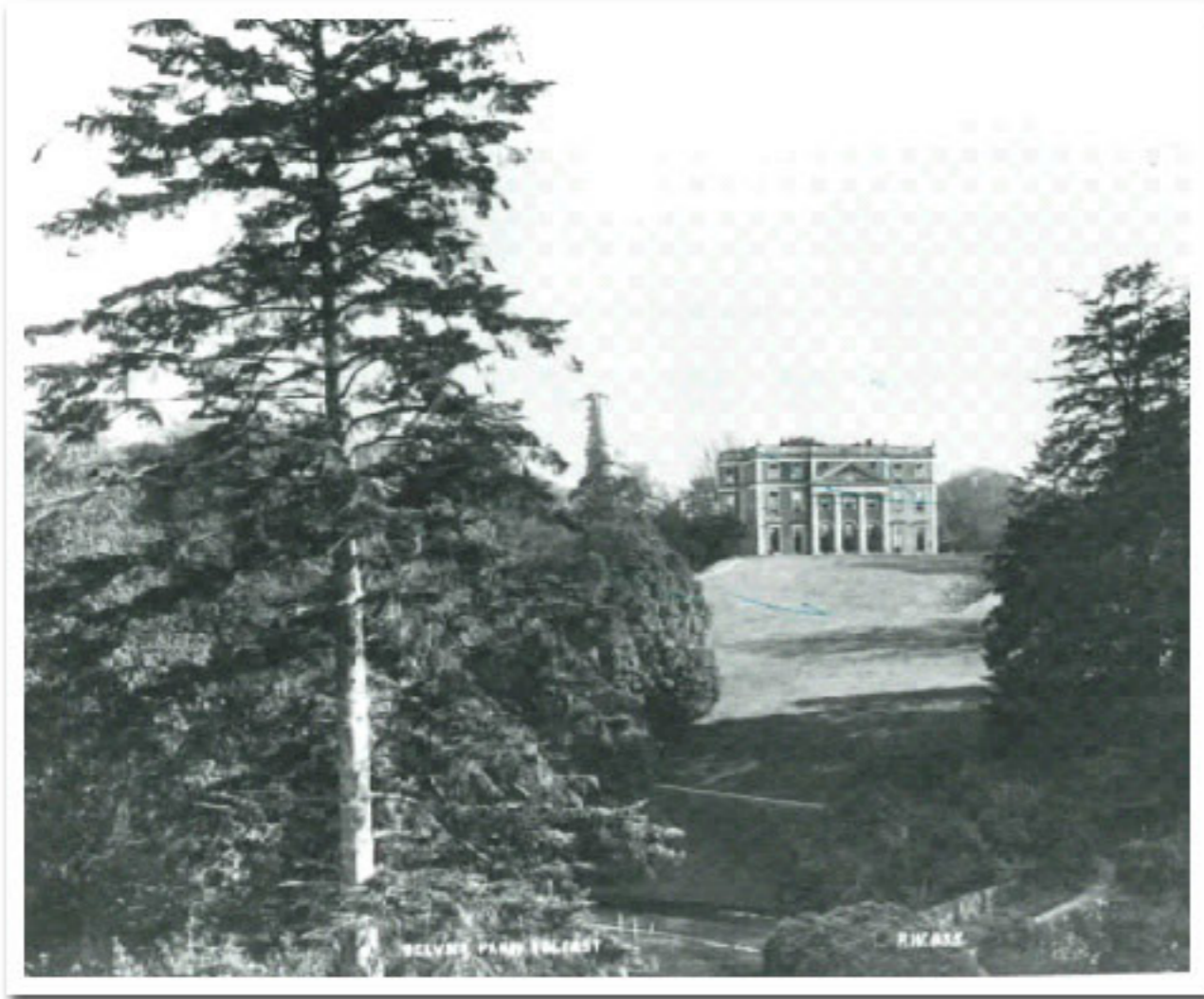


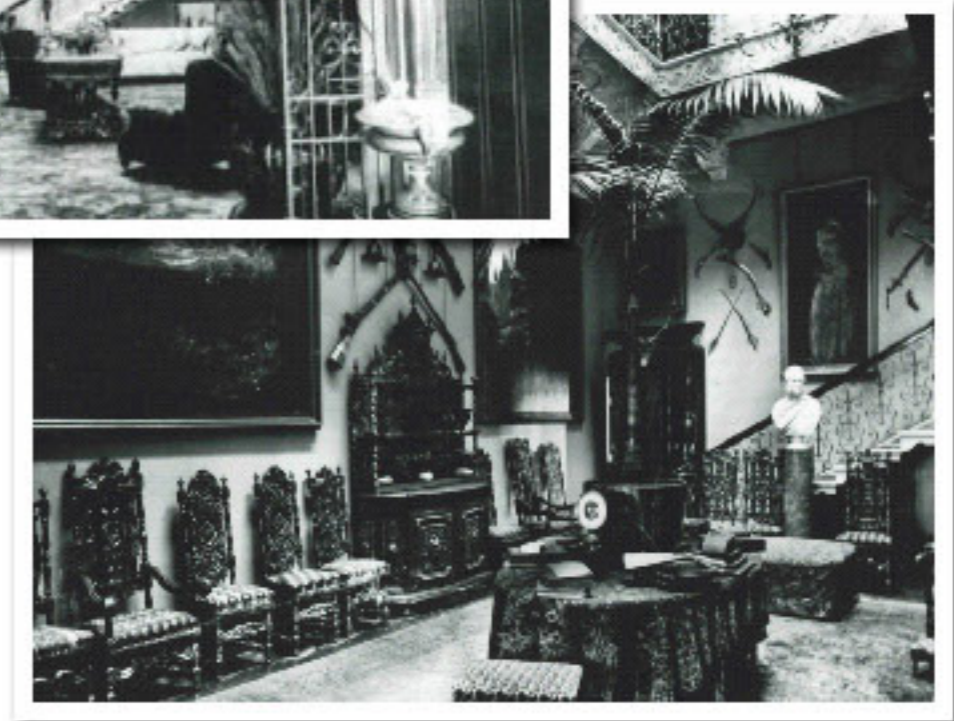
# The 'Big House'

## The House

Belvoir House in the Early 1900s



The Hall and Stairway



Drawing Room

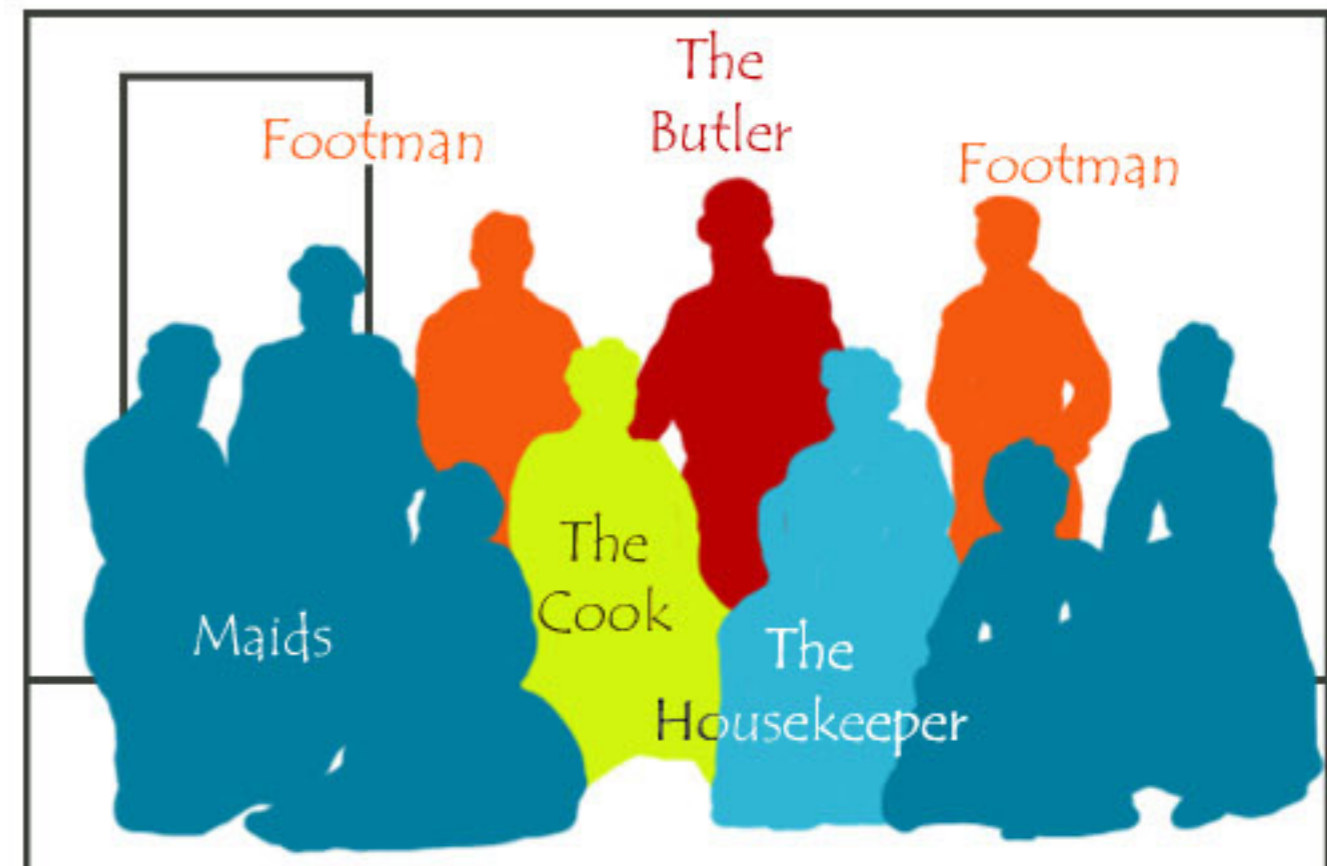


Dining Room



This was where the family and their guests went to relax after they had finished their dinner at night.

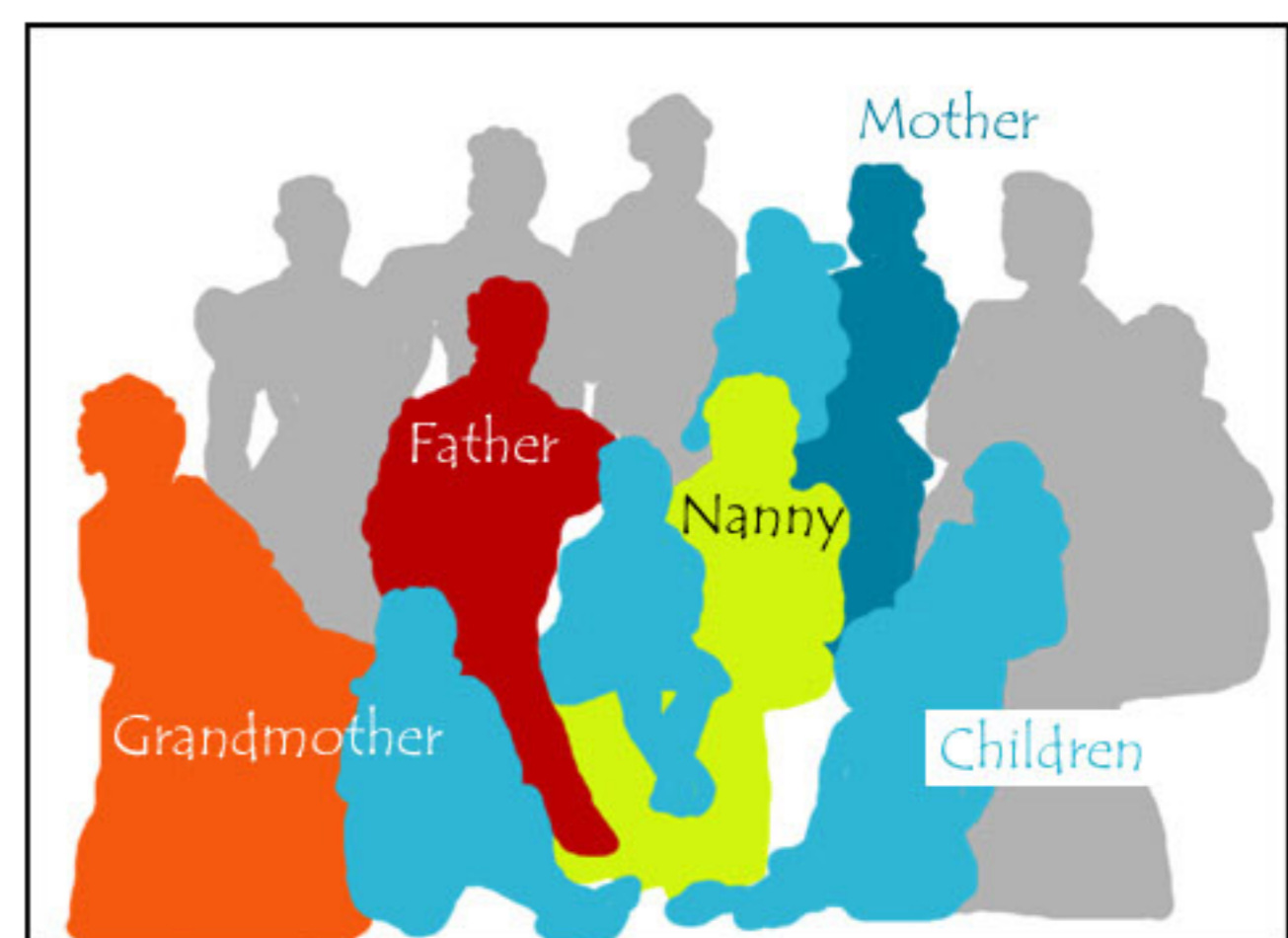
## Household staff



This is a picture of a typical group of Victorian household staff. In the household staff the most important person was the butler. He would have been in charge of all of the rest of the staff who each had their separate duties. Not all big houses had footmen as they cost a lot of money but Belvoir had them.

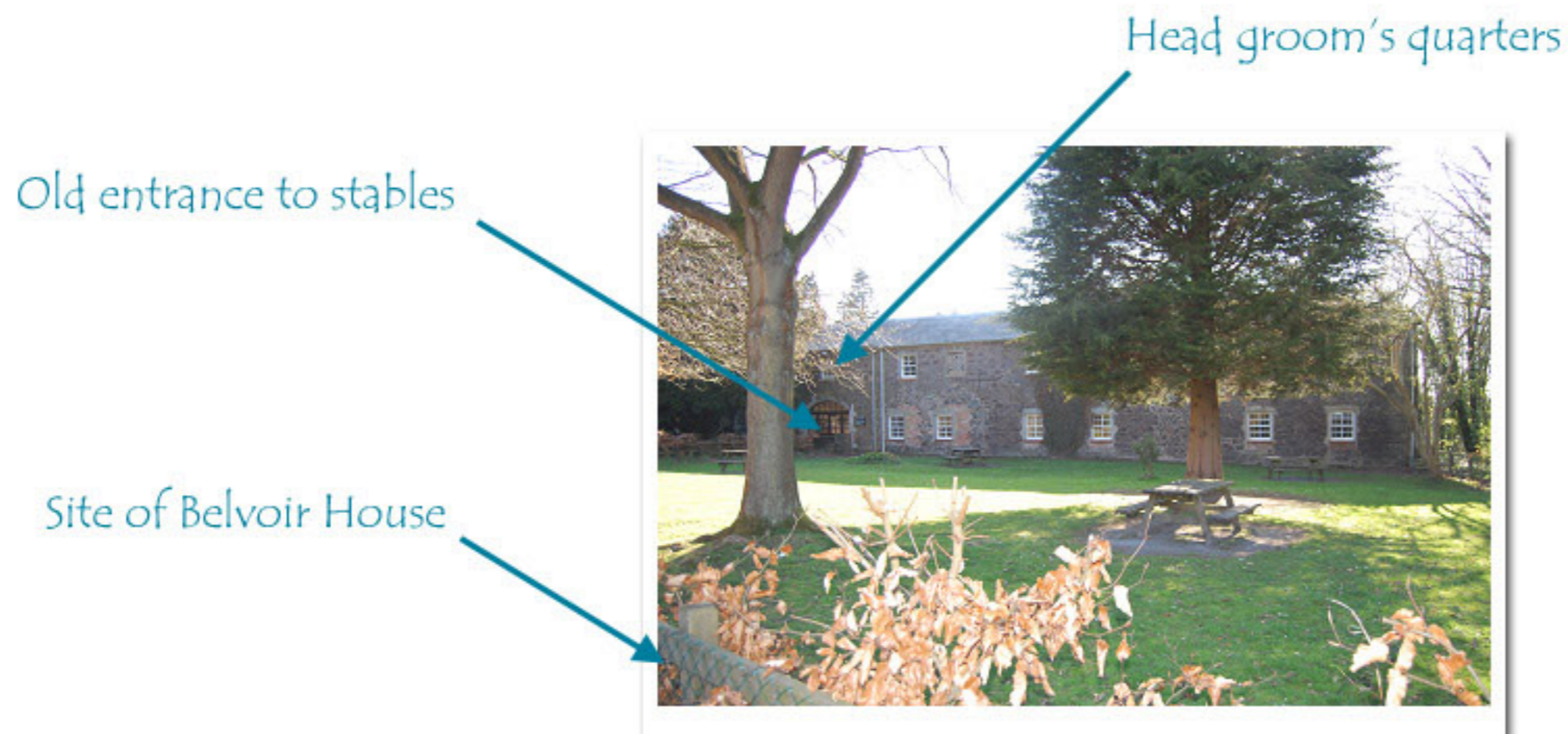
The most important female member of staff was the housekeeper. She would have taken her orders from the lady of the house and then would organise the maids to carry out the practical tasks.

## Victorian family



This is a photograph of a typical Victorian family similar to the family that lived in Belvoir. It was common for Victorian families to be large and a nanny or governess would be employed to look after the children and to help with their education in both school work and manners.

## The stables at Belvoir



Horses were very important to the families in Belvoir House. They were the way of getting around quickly and for use on the farm. The stables in Belvoir had a large number of horses and some of the staff had living accommodation there as well.

There is an archway which leads into the stable yard; this is the entrance to the stables. It was built to allow vehicles in and out.